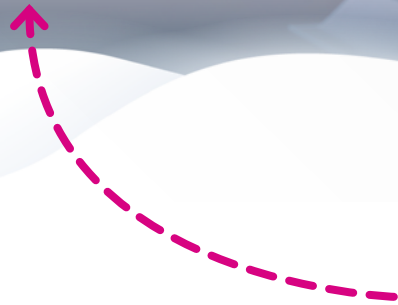


NEW 2024

# newline

## CLICK2CAST



### CAST YOUR SCREEN WITH A **SINGLE CLICK!**

Elevate your collaborative experience with Newline Click2Cast, the key to seamless wireless casting for your lessons or meetings, activated with just a click! Connect Click2Cast dongle to your laptop or smartphone and within seconds, it effortlessly syncs with your interactive display. No cables, no mess, just as simple as being on the same network. Click2Cast supports 4K resolution for a crystal-clear image that enhances your presentations. Plus, with its advanced multicasting capabilities users can connect simultaneously, ensuring a dynamic collaboration environment. Simplify your connectivity, amplify your impact!



Up to 9  
Streams  
Simultaneously



4K Ultra-High  
Definition



Touchback



One Click Casting



Bring Your  
Own Meeting



Broad  
Compatibility

**MODEL**

CLICK2CAST

**CAMERA**

Wi-Fi	5 GHz & 2,4 GHz
Authentication Protocol	WPA2 (WPA2 PSK (Pre Shared key) / WPA2 Enterprise)
Frame Rate	30 fps (4K), 60 fps (FHD)
Output Resolution	up to 3840 x 2160 (4K)
Latency	150 ms
Ports	USB Type-C
OS Support	Windows® 7, Windows 8.1, Windows 10 or Windows 11, MacOS™, Chrome OS, Linux OS, Android

**POWER CONSUMPTION**

Input Voltage	5 V (USB Type C Power Supply)
Current Consumption	0,9 A
Power Consumption	2,5 W

**TRANSPORTATION**

Operating Temperature	-0° ~ 40°
Storage Temperature	-20° ~ 60°
Dimensions	176 mm x 58 mm x 17 mm
Packaging dimensions	213 x 110 x 35 mm
Net Weight	80 g

**EXTRA FEATURES**

LED	Blue / Green / Red
Mouse Cursor Control Back	Yes
Touchback	✓
Maximum Number of Simultaneous Streams	Grid view: up to 9
Extended Screen Casting	✓
Mirror Control	✓
BYOM (Bring Your Own Meeting)	Coming Soon

**CERTIFICATIONS**

Internal certifications	CE / REACH / WEEE / RoHS / ISO
-------------------------	--------------------------------

**PACKAGE CONTENT**

Dongle USB Type-C	1
USB Type-C to USB Type-A Adaptor	1
User guide	1

**COMPATIBILITY**

Embedded in Display	23QA, 23QAS, 23QCA, 23QCA+
---------------------	----------------------------