



newline

**IN DEPTH  
MAGAZINE**

EDITION #2

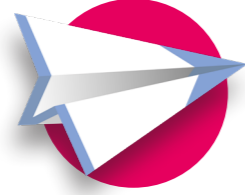
WHAT CAN  
YOU DO TO  
**SAVE ENERGY?**

WHILE USING A NEWLINE INTERACTIVE DISPLAY

TIPS & TRICKS ON HOW

TO PUT INTO PRACTICE

# WHY?



## **A healthier planet is our mutual responsibility!**

At Newline we are committed to contributing to a healthier future for our planet. And when it comes to our interactive displays, we have learned that besides prolonging the lifecycle of our products and recycling, the biggest positive impact can be achieved by minimizing energy consumption.

We cannot visit every workplace, but we can show you good practice and help you minimize your energy consumption while using our interactive displays. We have designed our products with a broad range of settings that can help minimize the amount of energy being used by our interactive displays.

This guide will take you through our tips, tricks and good practices step by step. Thank you for taking your responsibility and implementing these practices when using Newline products.

# hello!



## MENU



A USER FRIENDLY WAY **TO GET STARTED**



**IT CONFIGURATION** FOR ENERGY SAVING



**SMART CHOICES** FOR ACCESORIES



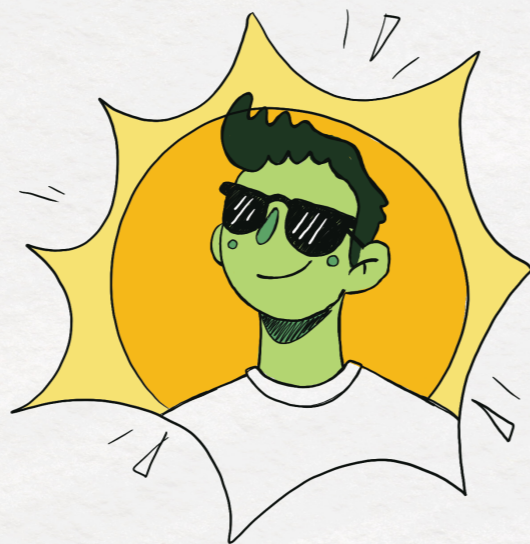
NEWLINE HARDWARE **IMPROVEMENTS**

# WHAT CAN *you* DO TO

Newline's interactive displays feature a wide range of settings that influence the energy consumption in a positive way. Make yourself acquainted with these settings and see how you can contribute to a healthier future for our planet by following our easy tips and tricks!

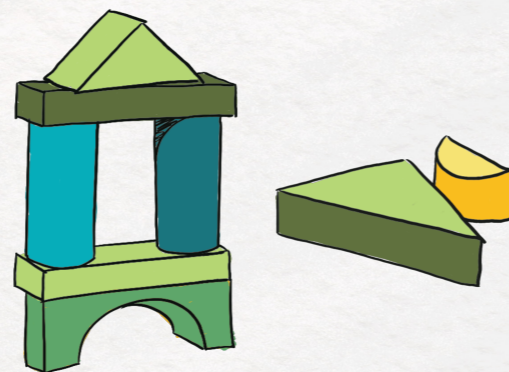
## BRIGHTNESS CONTROL

The LED display is the main component of the interactive display that consumes energy. Lowering the brightness level directly influences the energy consumption in a positive way! Good practice is to always set the interactive display to the lowest brightness you need in order to use the display. Pull up the quick start menu or use the remote control for fast and easy control of the brightness level.



## TASK MANAGER

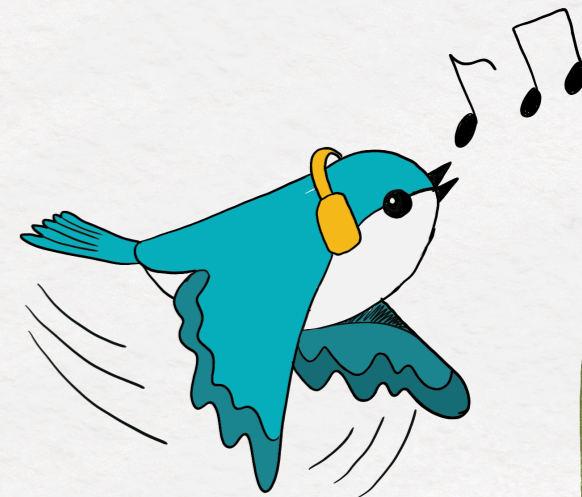
The use of numerous tasks in the background considerably increases the resources of the processor and memory of the display, and with them, the direct increase of energy consumption. The task manager allows you to manage tasks easily. Good practice is to close all unused apps and tasks in the background.



# Save energy

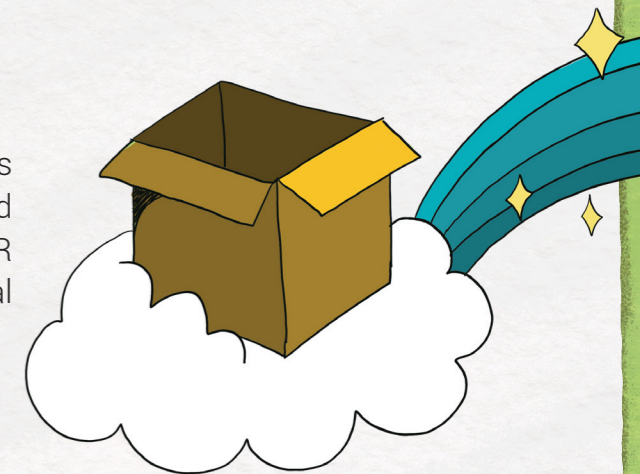
## SOUND ONLY

The Sound Only function allows you to use the sound of the interactive display without displaying visuals. As the lighting in the display is the main energy user here, this saves a lot of energy in case of e.g. a listening test in class.



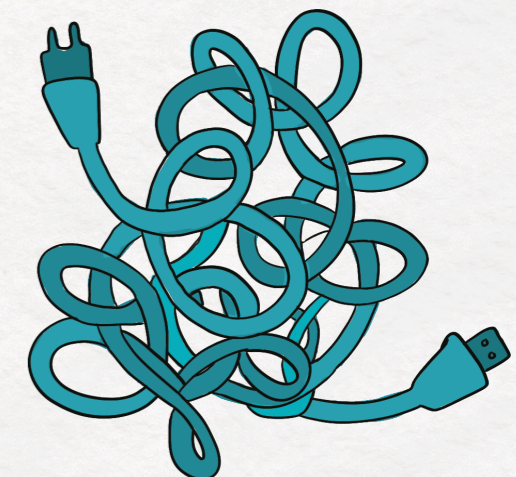
## CLOUD STORAGE

Avoid the production of physical memory devices for local storage of your files. Good practice would be to use cloud storage. Newline has used QR technology to help you save files to your personal cloud account even faster.



## USE BLUETOOTH

Bluetooth can be used perfectly for devices in short-range to exchange data with the Newline interactive display. This way there is no need for cables or connection devices and their related energy consumption and production costs. Good practice!



# IT CONFIGURATION FOR IT ADMINS

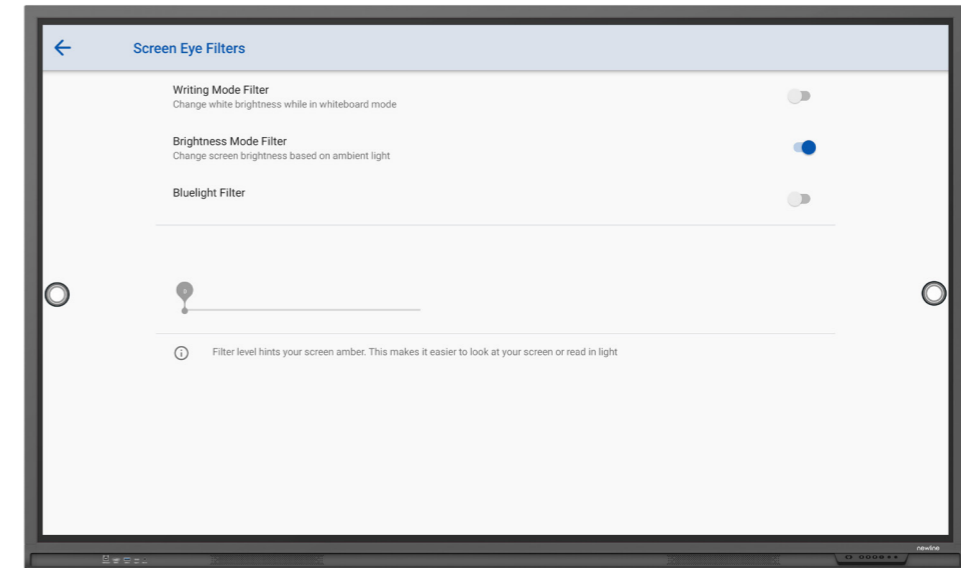
*or for the non-technicals  
who feel confident enough!*



## 2. IT CONFIGURATION FOR ENERGY SAVING

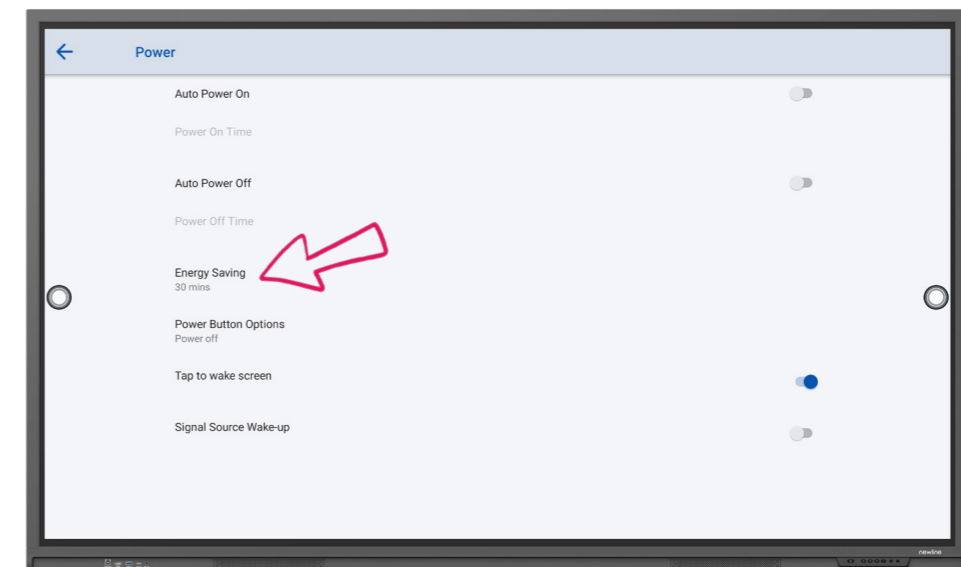
### 1. AMBIENT LIGHT SENSOR (LYRA / ELARA / VEGA)

The interactive display includes a light sensor that allows the brightness to be automatically adjusted to the ambient light. In places with sufficient light, the brightness of the screen will be automatically reduced which also automatically lowers the energy consumption.



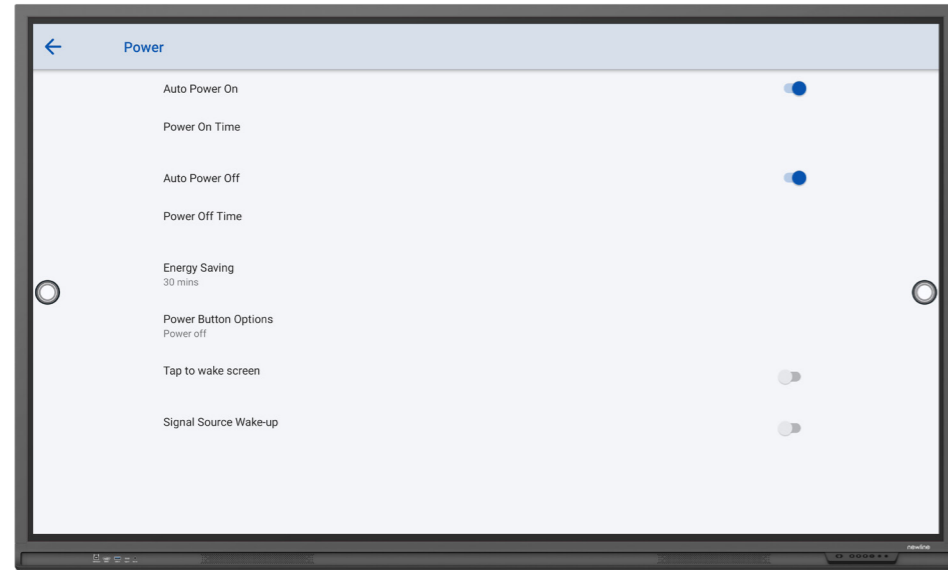
### 2. SLEEP MODE (LYRA / ELARA / VEGA)

Sleep mode is a "low power mode" that can be activated automatically when the interactive display is not being used for a certain amount of time. Sleep mode can be enabled/disabled and the time can be set. There is also an option to wake up the display from sleep mode by tapping it.



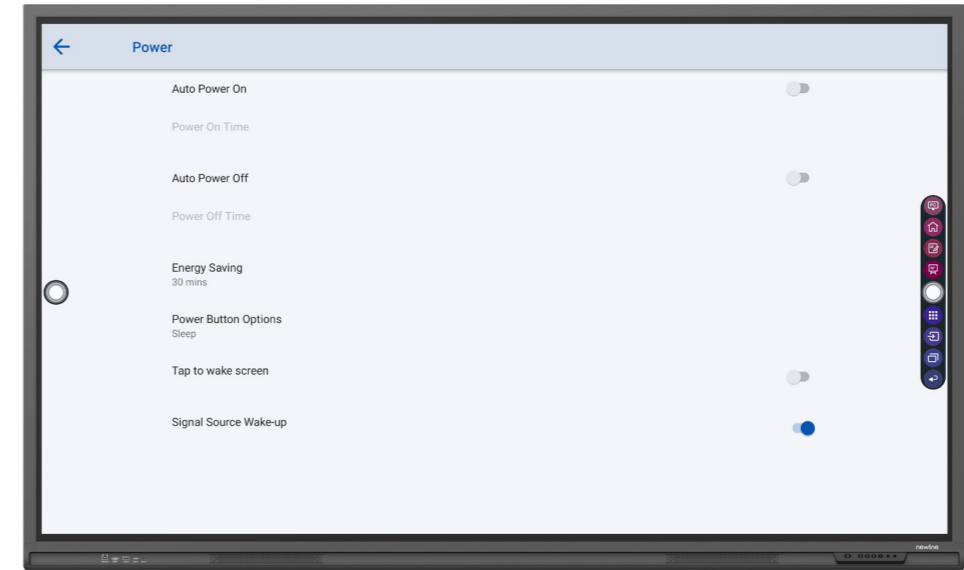
### 3. AUTO POWER ON/OFF (LYRA / ELARA / NAOS+ / VEGA)

This function allows you to program the days and times at which you want the interactive display to turn on and off automatically. The automatic power off function makes sure that the interactive display doesn't stay on while no one is using the device.



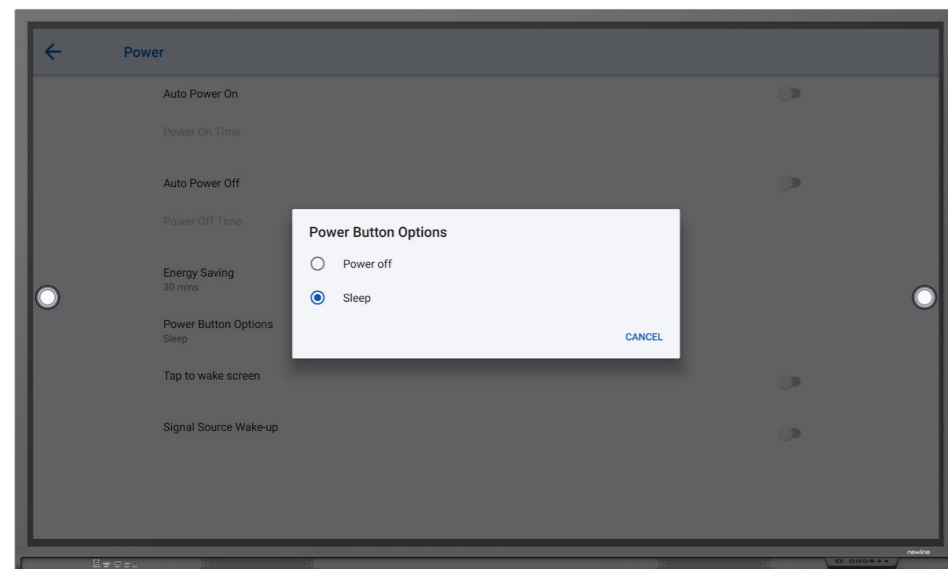
### 5. WAKE ON LAN (LYRA / ELARA / NAOS+ / VEGA)

This function enables you to remotely power on the Newline interactive displays on the same IP address for support or maintenance without having to keep the displays on all the time! Simply enable the function and wake up the displays with your computer.



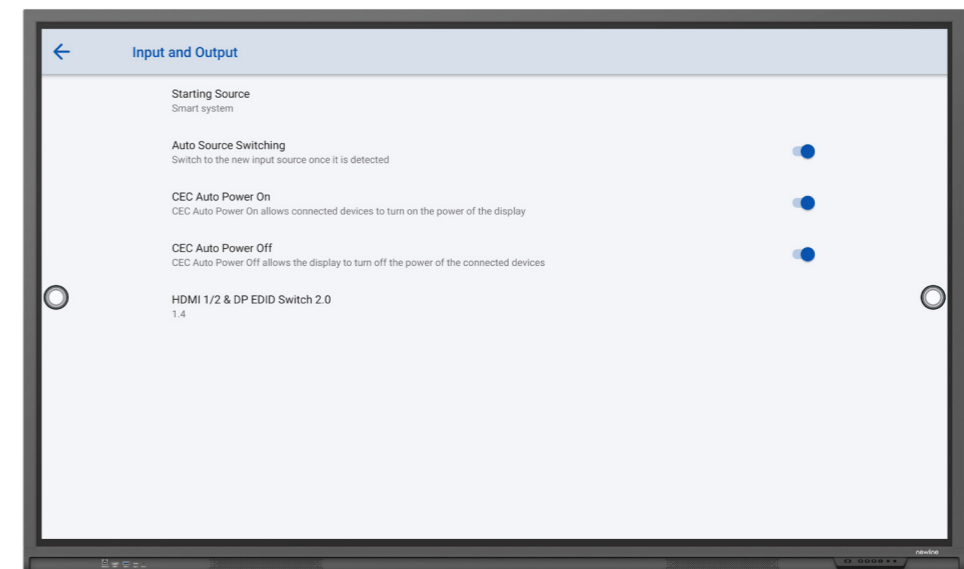
### 4. POWER BUTTON OPTIONS (LYRA / ELARA / VEGA)

The power button (ON/OFF) can be configured to go into sleep mode instantly. The power consumption during a standby or sleep mode is lower than 0,5 Watts.



### 6. WAKE ON SOURCE (LYRA / ELARA / NAOS+ / VEGA)

Thanks to the CEC function, the interactive display will automatically power on when connecting to HDMI or OPS. This is by far the quickest and most energy efficient way to get started when you would like to use an external device with the interactive display.



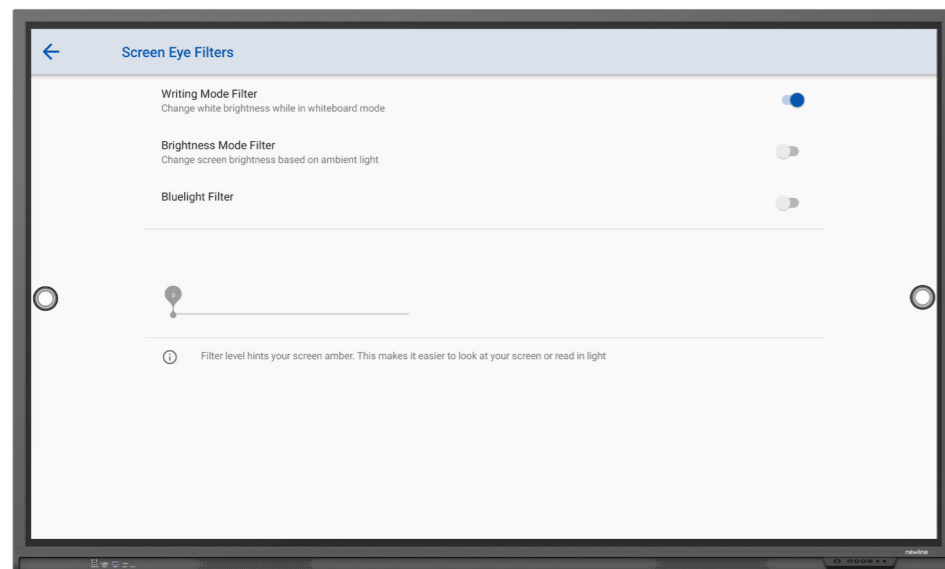
## 7. MOTION SENSOR (ELARA / VEGA)

The motion sensor will detect any movement in the room within 8 meters from the interactive display and will power on the display when this function is enabled. Ensure that no energy gets lost. Only operate the interactive display when people are around.



## 8. WRITING MODE FILTER (LYRA / ELARA / VEGA)

When enabling the writing mode filter, the light sensor will detect whether someone is writing. This function works together with the eye care function, and it reduces the brightness of the display while writing on the whiteboard.



**NOW THAT  
WAS EASY  
PEASY!**

**AND AN ENERGY-FRIENDLY  
WAY TO GET STARTED**

# SMART CHOICES FOR ACCESSORIES

*Also easy peasy!*



1

## USE AN **SDM OR OPS**

Instead of a computer or any other external device, good practice would be to use a “slide-in” computer like an OPS or SDM. This way you will not need any extra cables to connect. As OPS and SDM computers are far smaller, there is less material needed to make them, less carbon footprint in transporting them and on top of that, an OPS or SDM inserted in our interactive display consumes less energy than an external device!



2

## **CLOUD STORAGE**

Avoid the production of physical memory devices for local storage of your files. Good practice would be to use cloud storage. Newline facilitates easy cloud storage through file commander or use the QR-code in the whiteboard. You can also easily transfer files via Newline Cast to and from your personal device to store them locally.



3

## CONNECT VIA **BLUETOOTH OR WIFI**

Wireless connections help you avoid the use of cables or alternative external devices built for connectivity. Newline’s interactive displays feature the latest certified WiFi and Bluetooth for lightning fast connectivity with great capacity, efficiency and performance. This saves on production cost for external devices and cables, and also their related energy consumption!



4

## **NEWLINE CAMERA**

Newline accessories are tailor-made for our interactive displays. For instance, our camera fits perfectly on top of the displays, without the need for any extra devices, cables or brackets. This is the best and most energy efficient way to add camera functionality to the interactive display.





# NEWLINE HARDWARE IMPROVEMENT



## PACKAGING

For our new 2022 productline we have managed to reduce the materials needed in packaging our products. Also all of our packaging is 100% fully recyclable.



## TRANSPORTATION

By using smaller packaging for our products, we can squeeze in 46% more per container! This is a big step in the reduction of CO2 through transportation.



## WAREHOUSE

85% of the stock for EMEA is kept in the DSV warehouse. We have chosen DSV as our partner because they will reduce their total CO2 footprint by 40% before 2030.



## MODULAR SYSTEM

Our new products have been built in a modular way. You can build the products up to fit your needs. This way we reduce using materials that will not be used. On top of this, our new products are upgradable. This ensures a much longer product lifecycle. Important for the environment and your budget!



## ENERGY EFFICIENCY

We are putting in all the effort to make our products as energy efficient as possible. CE (EMC + LVD + FCC + red), RoHS, Reach, Energy efficiency, Energy star.



## COMPANY CERTIFICATES

- ISO 9001
- ISO 14001
- ISO 27001
- ISO 45001
- RoHs
- Reach





**CONGRATULATIONS, YOU DID IT!**

YOU ARE NOW CONTRIBUTING  
TO A HEALTHIER FUTURE  
FOR OUR PLANET!



---

**NEWLINE INTERACTIVE EUROPE S.L.**

[newline-interactive.com/eu](https://newline-interactive.com/eu)

[info\\_eu@newline-interactive.com](mailto:info_eu@newline-interactive.com)